

COMPACT CONTROLLER

PROMATIC® CMP25-2



INTRODUCTION



Promatic CMP25-2 is a modern weather compensated heating controller with built-in actuator.

It is the first compact controller with a touch screen, innovative and unique concept, modern design and user friendly interface. The controller has a new way of selecting the hydraulic schemes. Its state of the art construction allows easy »Plug & Play« installation.

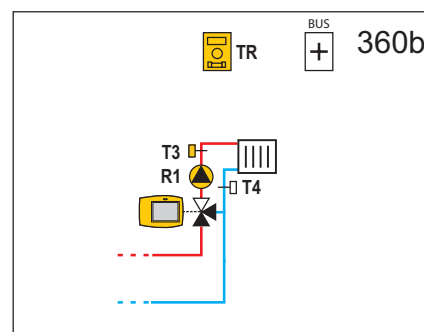
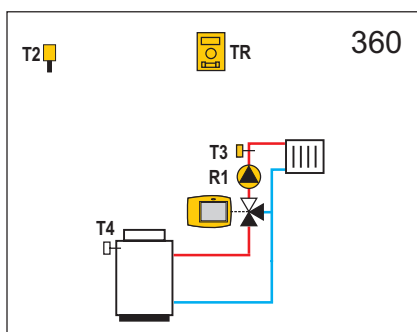
Settings are simply carried out by touching the screen while following the menus in one of the 14 languages.

Main advantages of the CMP25-2 are: efficient energy saving, simple interactive programming, possibility to expand heating system, error diagnostics and automatic switchover to an alternative heating mode.

FEATURES

- weather compensated control of the heating system
- control of the mixing heating circuit
- weekly rogram timer
- maximal stand-pipe temperature limitation for floor heating
- automatic switchover winter / summer
- frost protection
- anti-blocking program for circulation pump and valve
- optional BUS connection with other controllers
- error diagnostics and automatic switchover to the alternative operating mode
- navigation by means of graphic icons,
- operation with or without room temperature sensor.

APPLICATIONS



COMPACT CONTROLLER

PROMATIC® CMP25-2



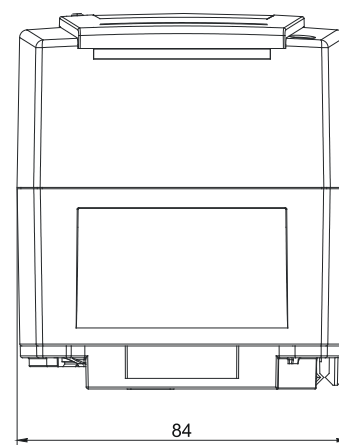
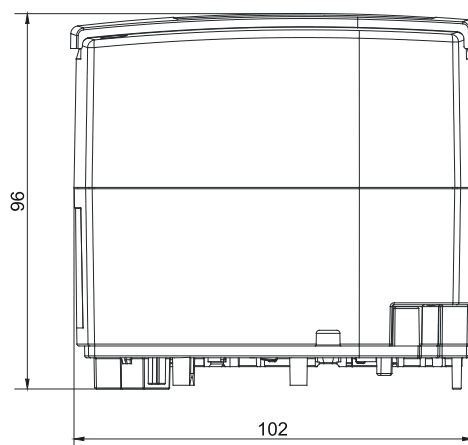
CONNECTION TERMINALS

GND	1	2	3	4	5	6	7	8	9	10
T1 / COM1										
GND										
COM1										
GND										
T2 / COM2										
GND										
T3										
GND										
T4										

TECHNICAL DATA

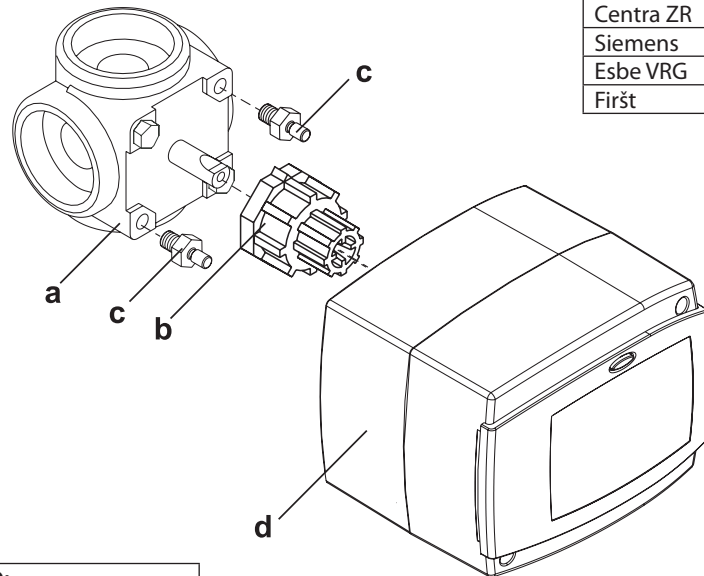
Supply voltage:	230 V ~ / 50 Hz, ± 10 %
Power consumption:	max. 4 VA
Load on pump output (R1):	230 V ~ / 4 (2) A
Measures (l × w × h):	84 × 105 × 100 mm
Weight:	900 g ÷ 950 g
Colour / Material	dark grey / PC
Degree of Protection:	IP42 acc. to EN 60529
Safety class:	I acc. to EN60730-1
Operation Type:	Tip 1B acc. to EN 60730-1
Operation temperature range	0 °C ÷ +40 °C
Storage temperature:	-20 °C ÷ +70 °C
Day temperature setting range:	10 °C ÷ 30 °C
Night temperature set point:	10 °C ÷ 30 °C
Heat curve set point:	0.2 ÷ 2.2
Frost protection temp. set point:	+ 6 °C (adjustable)
Frost protection temp. set point:	± 0.7 K ÷ ± 1.5 K
Temperature sensor type:	Pt1000 or KTY10
Program timer:	Digital multi-channel program timer
Mixing valve control:	PI - regulation with 3-point output

DIMENSIONS



INSTALLATION

PRODUCER, VALVE TYPE	CODE
Esbe	CMPMSA
Centra DR	CMPMSB
Centra ZR	CMPMSC
Siemens	CMPMSD
Esbe VRG	CMPMSE
Firšt	CMPMSF



LEGEND:

- a - Mixing valve
- b - Valve adaptor
- c - Anti-rotation screw
- d - PROMATIC CMP25-2

NOTES

This image shows a single sheet of white paper with horizontal blue or grey ruling lines. The lines are evenly spaced and run across the width of the page. There are approximately 20 lines visible. The paper has a slight shadow on its right side, suggesting it's resting on a surface.

COMPACT CONTROLLER

PROMATIC® CMP25-2

[illegible]

SELTRON d.o.o.
Ruška cesta 96
2345 Bistrica ob Dravi
SI - Slovenia

SELTRON d.o.o.
Tržaška cesta 85
2000 Maribor
SI - Slovenia

Tel.: +386 (0)2 671 96 00
Fax.: +386 (0)2 671 96 66
[http:// www.seltron.eu](http://www.seltron.eu)
E-mail: info@seltron.eu

